

GEQ Series

Automatic switching cabinet



GEQ SERIES DUAL POWER SUPPLY SWITCH CABINET

Can switch the power supply to the load
between two generators, or between
generators and power grid.



Wall-hanging type 50-400A



Standard:500-6300A



Emergency equipment power supply OEM supporting
and application solutions professional service provider

Features

- »» Standardized production line, keep the products with High Consistency, good quality.
- »» UL certified cables to meet international standard ;
- »» All controllers imported from European factory and certified;
- »» High standard surface treatment with powder coating ;
- »» QR code printed on the panel, convenient for customers to review;
- »» Controllers set with Multi-language Version(Chinese, English, German, French, Greek, Finnish and other 22 languages);
- »» Electric circuits equipped with surge protection diodes;
- »» Aviation connector defines each pin, to be universal and better Interoperability;
- »» Customized UV printing, Highlight customers' features;
- »» Standard copper bar and wire connection;
- »» The ATS controllers have AUTO mold and MANUL mold;
- »» The backup signal wires are connected to the terminal, convenient for customers to add function;
- »» The ATS body can be PC grade or CB grade;
- »» The MCCB or ACB combination, both of them have the protection function of short circuit;
- »» The ATS controller have three-phase power grid

Performance

Parameter Detection

- »»
- Three phases voltage inspection of Power Grid and Generator;
- Frequency inspection of Power Grid and Generator;
- Battery' s voltage.

Status Indicator

- »»
- Electrification indicator of Power Grid and Generator;
- Switch-on indicator of Power Grid and Generator;
- Zero Position Indicator.

Performances

The ATS cabinet with the function of Electric and Mechanical LOCK, ensure the accuracy and safety of switching.

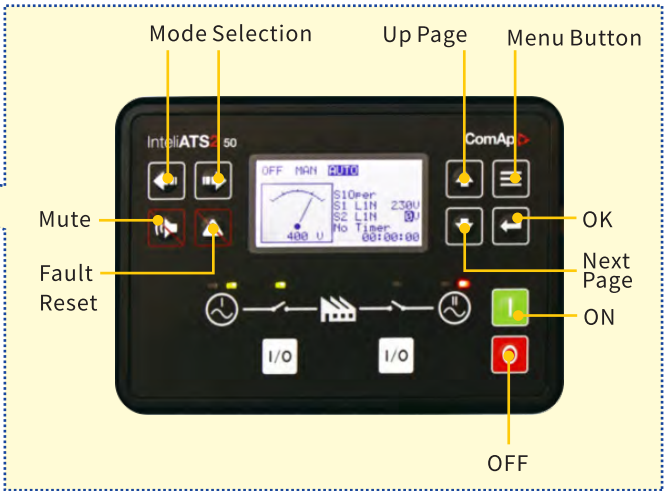
Key Functions of Controller ATS2

»»

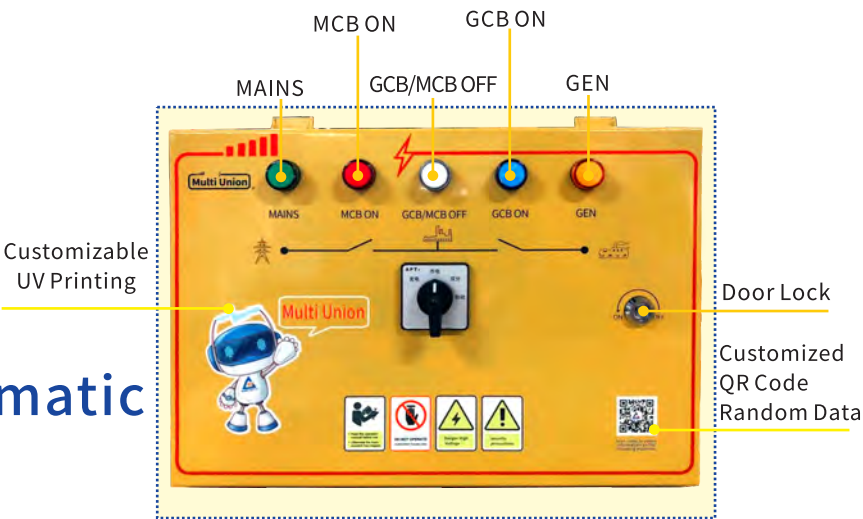
- When the Power Grid fails, the controller would switch and start generator units after 0-6000 seconds (adjustable), and the load would switch to the generation units automatically after 0-600 seconds (adjustable) once the generator units work stable.;
- When the utility power is restored, the controller automatically controls the ATS transfer switch to switch the load to the utility side after a delay of 0-3600 seconds (adjustable) and sends out a signal to stop the operation of the generator set after a delay of 0-6000 seconds (adjustable), and the generator set stops automatically after a cooling delay;
- The ATS control cabinet features manual and automatic power switching;
- The ATS has mains priority and is controlled by the ATS2 50 controller;
- ATS detects two three-phase voltage fault signals (including loss of voltage, over-voltage, under-voltage, phase shortage, etc.). When the utility power fails, it can give a control signal to the self-starting end of the generator set in time, so that the unit can start itself and prepare for power supply;
- Extended plug-in module (supports 4G, B1/B0 Ethernet);
- ATS2 70, 350 detailed history logs;
- ATS2 70, three-phase current measurement;
- Controller panel 5 language switching;
- Open Software;
- The controller can be powered via USB for easy

GEQ Series Automatic Switching Cabinet

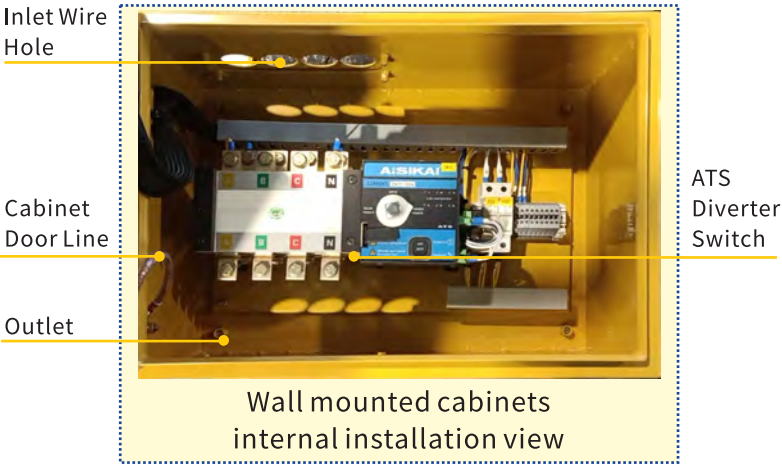
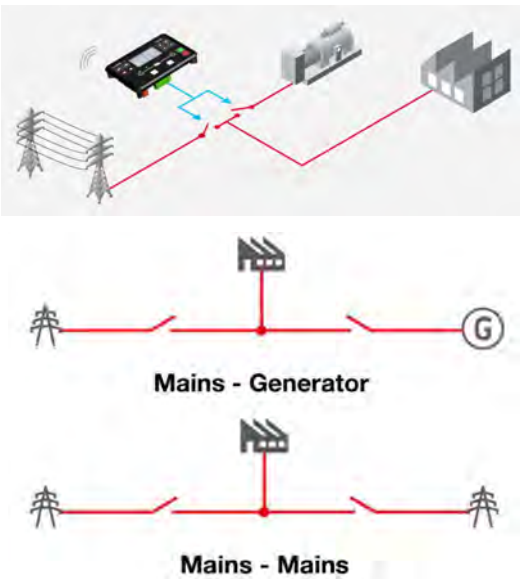
Product Showcase



Product Showcase



ATS controller schematic



Optional Controllers



ATS2 50



ATS2 70

NO.1	Sports Event	Parameters
1	ATS Power Input	Utility and power generation (2-way) three-phase four-wire system
2	ATS Power Output	Supply load (1 channel) three-phase four-wire system
3	Controller Power Supply	ATS motor power supply AC220-250V. Controller power supply DC8-36V
4	Two-way Power Conversion Time	0-3600 seconds delay time adjustable
5	Two-way Power Switching Delay	0-6000 seconds delay adjustable
6	Work Environment	Temperature: -20°C-70°C Humidity: 0%-90%
7	Standard Cabinet Size (W * H * D)	Customized W*H*D(mm)

»» GEQ series dual power switching cabinet can realize power switching between two units, between units and utility and load. The two power sources are monitored in real time by ComAp ATS2 controller or multi-function power meter.

»» The optional ATS2 controller also allows you to set the switching time of the main and backup power supplies, and manually and automatically realize the switching between the two power supplies.

»» GEQ series dual power switching cabinet adopts GGD, GCS cabinet type or wall-mounted homemade cabinet, ComAp ATS2 controller and ATS switch body and other configurations, which are characterized by stable working performance, low failure and maintenance rate.

»» GEQ series dual power switching cabinet is mainly used for important loads in the low-voltage power supply system, such as fire, hospitals, banks and data centers and other power supply places, need to switch the loads from the main power supply to the backup emergency power supply, in order to ensure that the important loads run continuously and reliably.

ATS Cabinet Selection

Note	Model suffix: AK = Eskay, AB = ABB, C = CB class; P = PC class; G0 = Homemade; G1 = GGD cabinet; G2 = GCS cabinet; 000 = Without controller, With 4-position changeover switch; A50 = ComAp controller I-ATS2-50; A70 = ComAp controller I-ATS2-70. GES2000-3P22FDLG1000T12 Indicates 22 models of 2000A DeLisi 3P circuit breakers, GGD cabinets, configured with top-mounted copper + busbar;
Example	GEQ-2000 4P AP G1A50 denotes 2000A ABB PC class 4P ATStoggle switch with ComAp controllerI-ATS2-50;
ATS Switch	ABB\AISIKATS Optional;
ATS Cabinet Configuration	Cabinet + controller (optional) + 4P main switch + changeover switch + relays, indicators, pushbuttons and accessories (no copper);
Optional Configuration	According to the customer's needs, we can choose different copper wiring (lead row basic models of lower inlet and outlet, mother row (including N row ground row)); Other copper wiring for further inquiries;You can choose different components components.

GEQ Series Automatic Switching Cabinet

Wall-mounted external dimensions

Amps (A)	Overall dimensions /mm (W*D*H)	Opening external dimensions /mm (W*D*H)	Packaging & Shipping Dimensions/mm (W*D*H)	Weights (Kg)
50	500*260*350	500*781*350	540*300*390	17
63	500*260*350	500*781*350	540*300*390	17
80	500*260*350	500*781*350	540*300*390	17
100	500*260*350	500*781*350	540*300*390	17
125	500*260*350	500*781*350	540*300*390	20
160	500*260*350	500*781*350	540*300*390	20
250	500*260*350	500*781*350	540*300*390	22
320	500*300*600	500*781*350	540*300*390	37
400	500*300*600	500*781*350	540*300*390	37

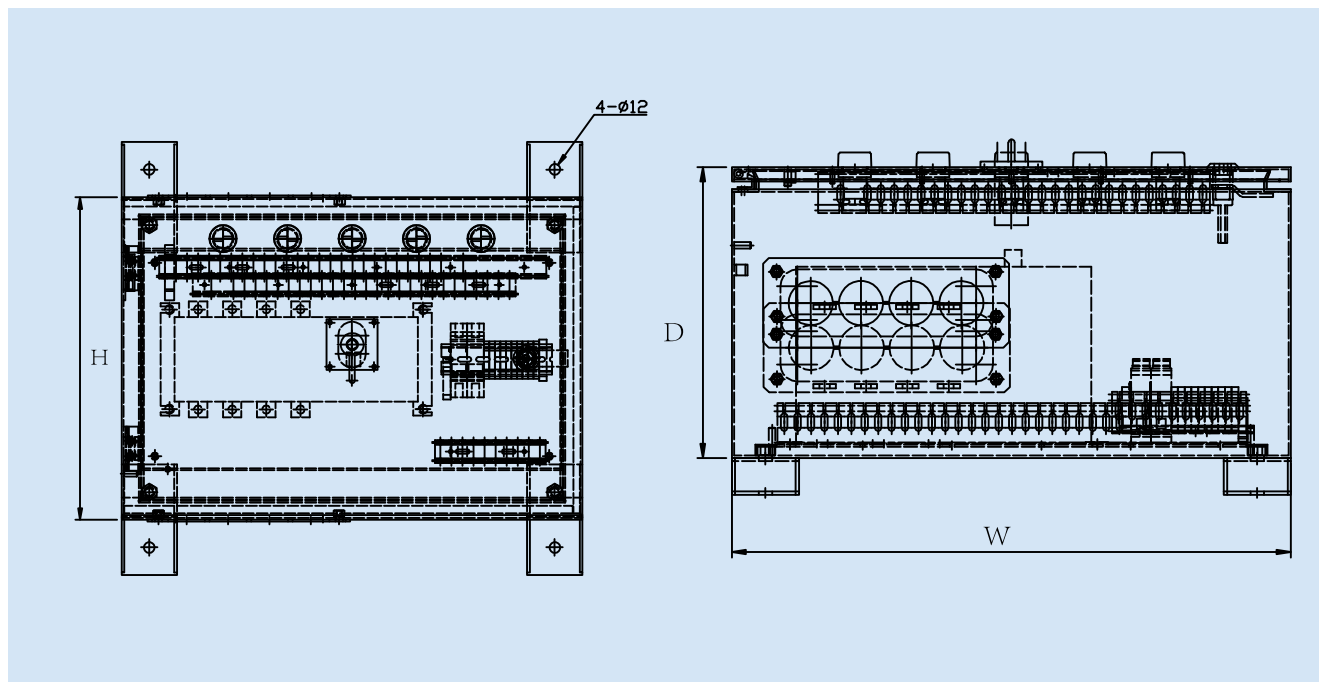
Standard external dimensions

Amps (A)	Overall dimensions /mm (W*D*H)	Opening external dimensions/mm (L*C*H)	Packaging & Shipping Dimensions/mm (E*F*I)	Installation size/mm (A*B)	Weights (Kg)
500	600*600*1900	600*1800*1900	700*700*1960	475*500	307
630	600*600*1900	600*1800*1900	700*700*1960	475*500	307
800	1000*600*1900	1000*1800*1900	1100*700*1960	875*500	399
1000	1000*600*1900	600*1800*1900	1300*700*1960	875*500	418
1250	1000*600*1900	600*1800*1900	1300*700*1960	875*500	445
1600	1000*600*1900	600*2000*1900	1300*700*1960	875*500	455
2000	1000*800*1900	600*2000*1900	1300*700*1960	875*700	599
2500	1000*800*1900	600*2000*1900	1300*900*1960	875*700	639
3200	1000*800*1900	600*2000*1900	1300*900*1960	875*700	902
4000	1200*1000*1900	600*2000*1900	1300*1100*1960	1075*900	902
5000	1200*1000*1900	800*2400*1900	1300*1100*1960	1075*900	1219
6300	1200*1000*1900	1000*3000*1900	1300*1100*1960	1075*900	1340

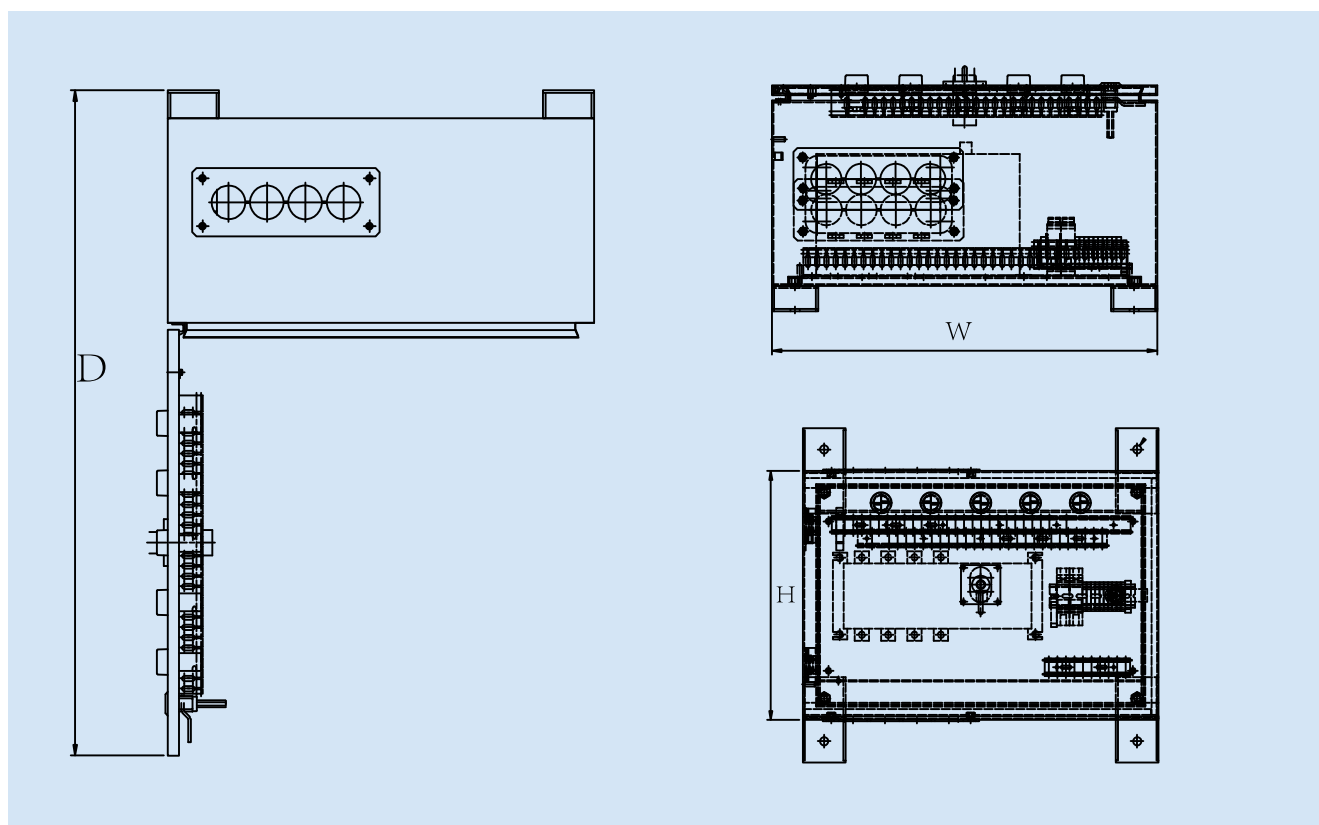
GEQ Series Automatic Switching Cabinet

ATS cabinet wall mounted external dimension drawing

»» Outline dimension



»» Open the external dimension diagram

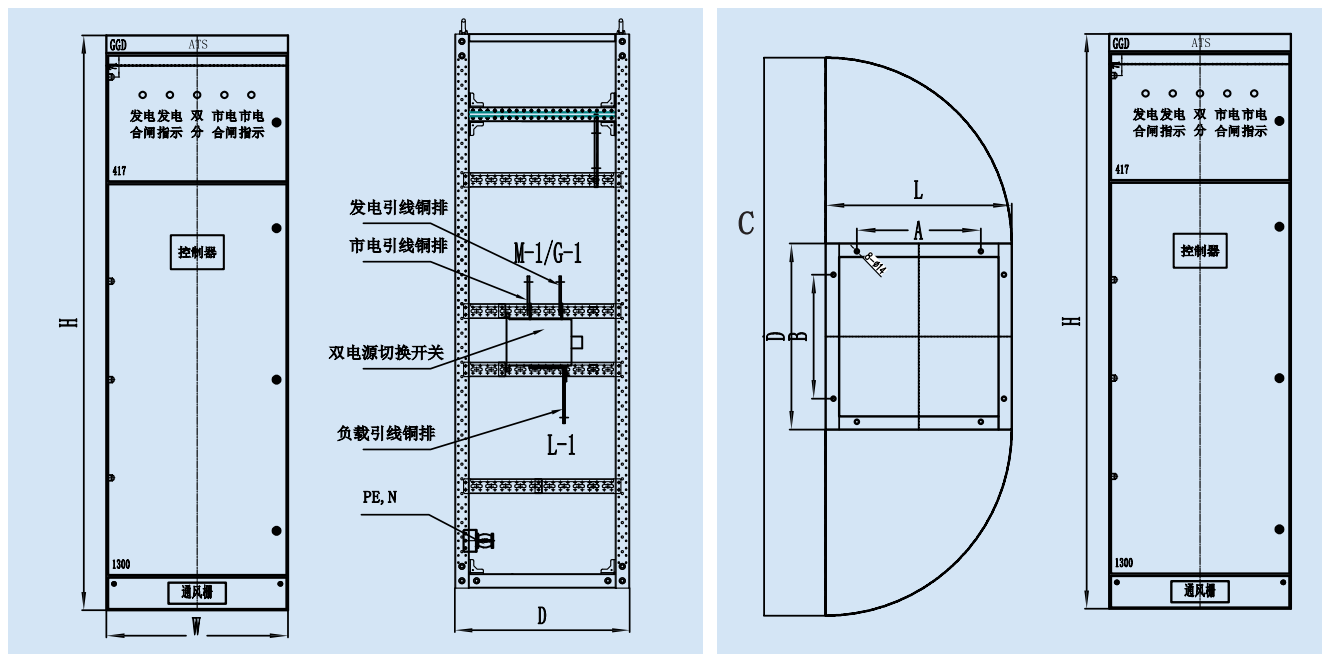


GEQ Series Automatic Switching Cabinet

ATS cabinet GGD cabinet external dimension drawing

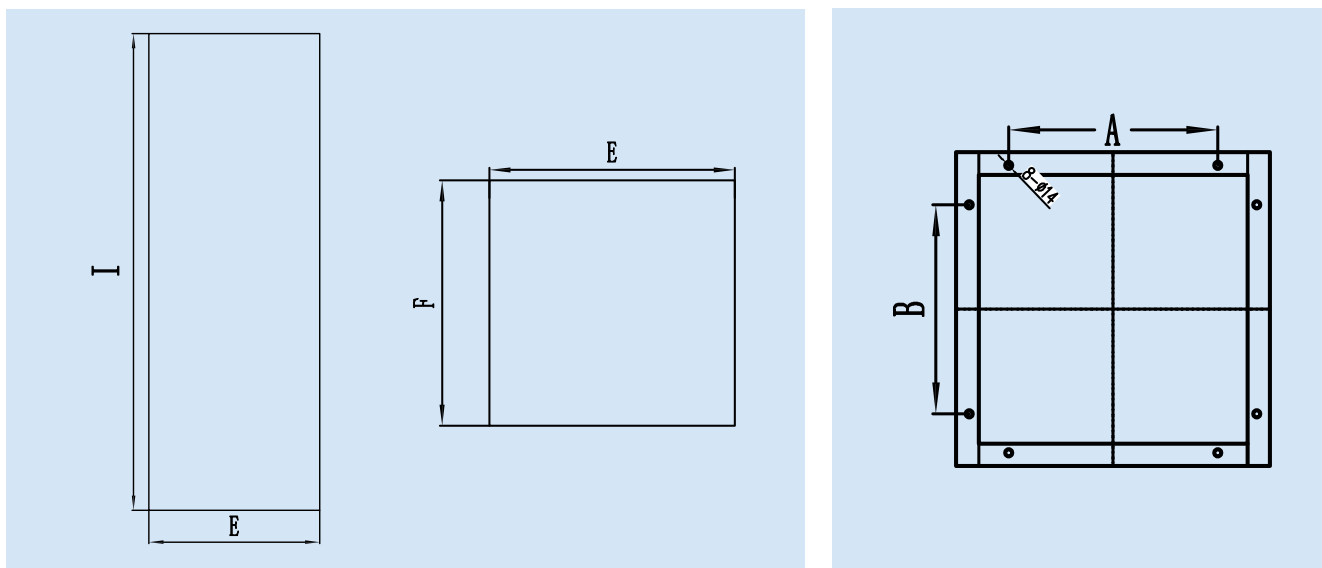
»» Outline dimension

»» Open the external dimension diagram



»» Packaging dimension diagram

»» Drawing



Integrity Doing things efficiently Expert Service

7X24H service hotline:
400-700-9669
www.multi-unionpower.com

Floor 12, Building D, Unis Sci-Tech Park, Fuzhou, Fujian, China

Building 13, The Songshan Area of Fuzhou Taiwanese Investment Zone,
Songshan Town, Luoyuan County, Fuzhou, Fujian



*The information contained in this manual is for reference only, and does not constitute any contractual component, the final right of interpretation belongs to Fuzhou Multi-Union Electric Equipment CO., LTD Product parameters may be adjusted at any time, for more product information, please contact us!